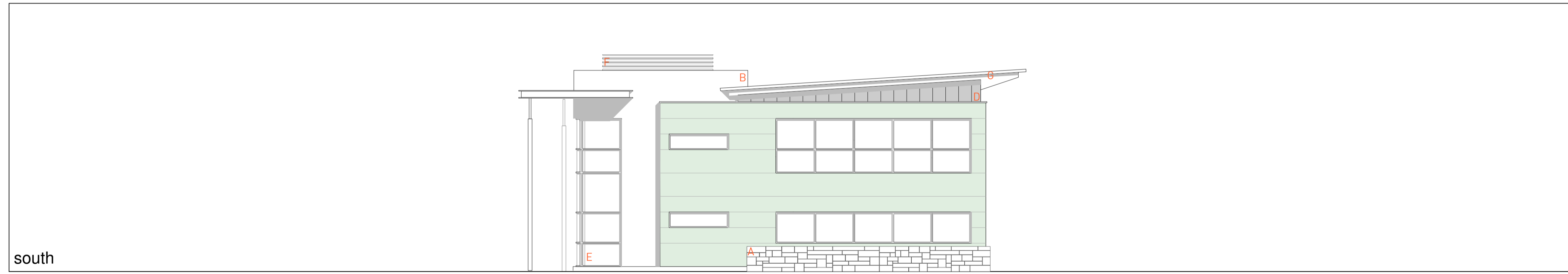
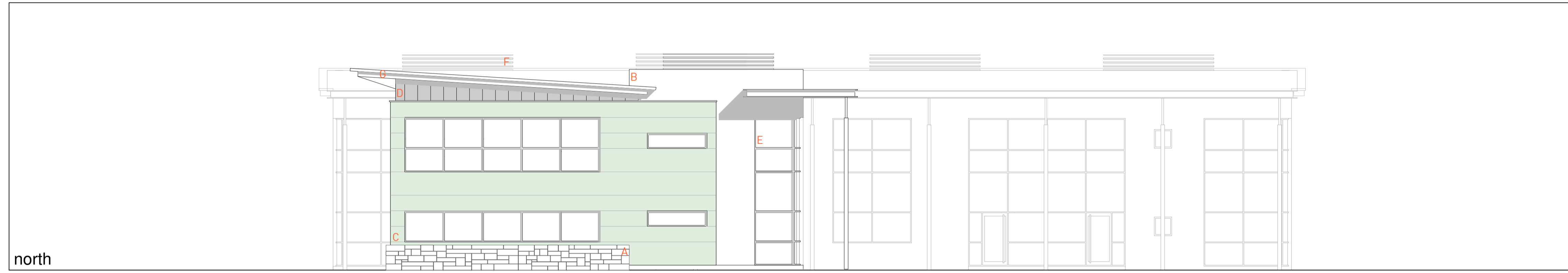
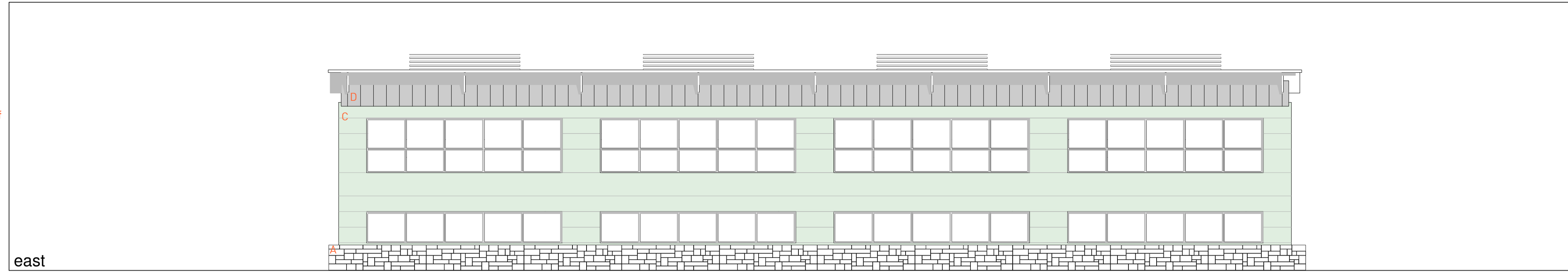


- Materials Key
- A - Coursed limestone
  - B - Through coloured render
  - C - Insulated PPC panels
  - D - Standing seam zinc cladding
  - E - PPC Curtain walling system
  - F - Aluminium PPC louvres
  - G - Standing seam aluminium roof



Building 5400 Elevations 1:100

**russdrage architects**  
 pelham house  
 25 pelham square  
 brighton  
 +44 (0)1273 667993  
 +44 (0)1276 667994  
 mail@russdrage-architects.com

**North Wales Technology Park**  
**Buildings 5400 & 5500 - NWBP**  
**AP151 P101**  
 02.02.2007